

**Monarch BST**

An Inovance Company

**MD500L series**

**Elevator open loop AC Drive**




**Forward, Always Progressing**

# Elevator open loop AC Drive

## Application Features

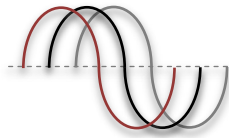
- Smooth ride performance
- Integrated brake control
- UPS/ARD (sine & quasi square type) rescue light load direction sensing
- 5 independent S-Ramps
- Easy setup with default factory setting, gets you started quickly
- Programmable DC injection braking

Enhanced reliability with conformal coating, protects against humidity and pollution by dust

Operation in high  45°C<sub>avg</sub> ambient temperatures

Wide operating voltage range  
323 to 528Vac

Cooling fan removable for easy maintenance

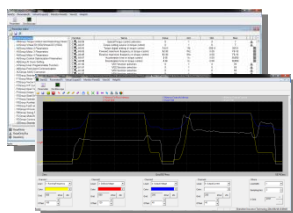


Optional: Hot pluggable remote keypad



With/without memory

\*1PC-Tools Software simplified start up & backup



\*1 Compatible with Window 7



3.7kW~15kW

## Inverter Key Features

- Automatic torque boost
- Slip compensation
- Flexible programmable I/O's
- Onboard Modbus-RTU
- Comprehensive trip diagnostics
- Built-in dynamic braking unit
- Output frequency 0.00~100.00Hz



## General Specifications

Drive Model		MD500L-T3.7GBO	MD500L-T5.5GBO	MD500L-T7.5GBO	MD500L-T11GBO	MD500L-T15GBO	
Dimension	Height	[H]: 200 mm		[H]: 250 mm		[H]: 280 mm	
	Width	[W]: 130 mm		[W]: 140 mm		[W]: 180 mm	
	Depth	[D]: 162 mm		[D]: 170 mm		[D]: 170 mm	
Drive Input	Rated Input Voltage	3 phase 380 to 480V, -15% to +10% (323Vac to 528Vac)					
	Rated Input Current [A]	11.4	16.7	21.9	32.2	41.3	
	Rated input frequency	50/60 Hz, ±5% (47.5 to 63Hz)					
Drive Output	Applicable Motor	[kW]	3.7	5.5	7.5	11	15
		[HP]	5	7.5	10.0	15	20
	Output Current [A]*2		9	13	17.0	25	32
	Power Capacity [kVA]		5.9	8.9	11	17	21
	Overload Capacity		150% for 60 Sec & 180% for 3 Sec				
	Max. output voltage		Three-phase 380Vac to 480Vac (Proportional to input voltage)				
	Max. output frequency		100.00 Hz				
Braking Resistor	Recommended power [W]	750	1200	1500	2500	3000	
	Recommended resistance [Ω]	≥ 130	≥ 90	≥ 65	≥ 43	≥ 32	
Enclosure				IP20			

\*2Carrier switching frequency 6kHz at rated output current

\*\* All units are fan cooled

## General Connection Diagram

