

## MD380L Series

## Open loop AC elevator drive



# Open loop AC elevator drive

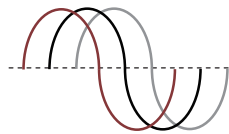
## Application Features

- Smooth ride performance
- Integrated brake control
- UPS/ARD (sine & quasi square type) rescue light load direction sensing
- 5 independent S-Ramps
- Easy setup with default factory setting, gets you started quickly
- Programmable DC injection braking

Enhanced reliability with conformal coating, protects against humidity and dust pollution

Operation in high ambient temperatures  45°C<sub>avg</sub>

Wide operating voltage range 323 to 528 Vac



Cooling fan removable for easy maintenance

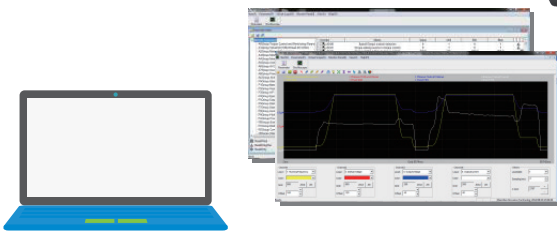


Optional: hot pluggable remote keypad



With/without memory

\*1 PC-Tools software offers simplified start up & backup



\*1 Compatible with Windows 7



3.7 kW~15 kW

## Drive Key Features

- Automatic torque boost
- Slip compensation
- Flexible programmable I/O's
- Onboard Modbus-RTU
- Comprehensive trip diagnostics
- Built-in dynamic braking unit
- Output frequency 0.00~100.00 Hz





## General Specifications

Drive Model		MD380L-T3.7GB	MD380L-T5.5GB	MD380L-T7.5GB	MD380L-T11GB	MD380L-T15GB	
Dimensions	Height [mm]	248			322		
	Width [mm]	160			208		
	Depth [mm]	183			192		
Drive Input	Rated Input Voltage	3-phase 380 to 480 Vac, -15% to +10% (323 to 528 Vac)					
	Rated Input Current [A]	10.5	14.6	20.5	26	35	
	Rated Input Frequency	50/60 Hz, ±5% (47.5 to 63 Hz)					
Drive Output	Applicable Motor	[kW]	3.7	5.5	7.5	11	15
		[HP]	5	7.5	10	15	20
	Output Current [A]*2	9	13	17	25	32	
	Power Capacity [kVA]	5.9	8.9	11	17	21	
	Overload Capacity	150% for 60 Sec & 180% for 3 Sec					
	Max. Output Voltage	3-phase 380 to 480 Vac (Proportional to input voltage)					
	Max. Output Frequency	100.00 Hz					
Braking Resistor	Recommended Power [W]	750	1,200	1,500	2,500	3,000	
	Recommended Resistance [Ω]	≥ 130	≥ 90	≥ 65	≥ 43	≥ 32	
Enclosure		IP20					

\*2 Carrier switching frequency 4 kHz at rated output current  
Please note: all units are fan cooled

## General Connection Diagram

